



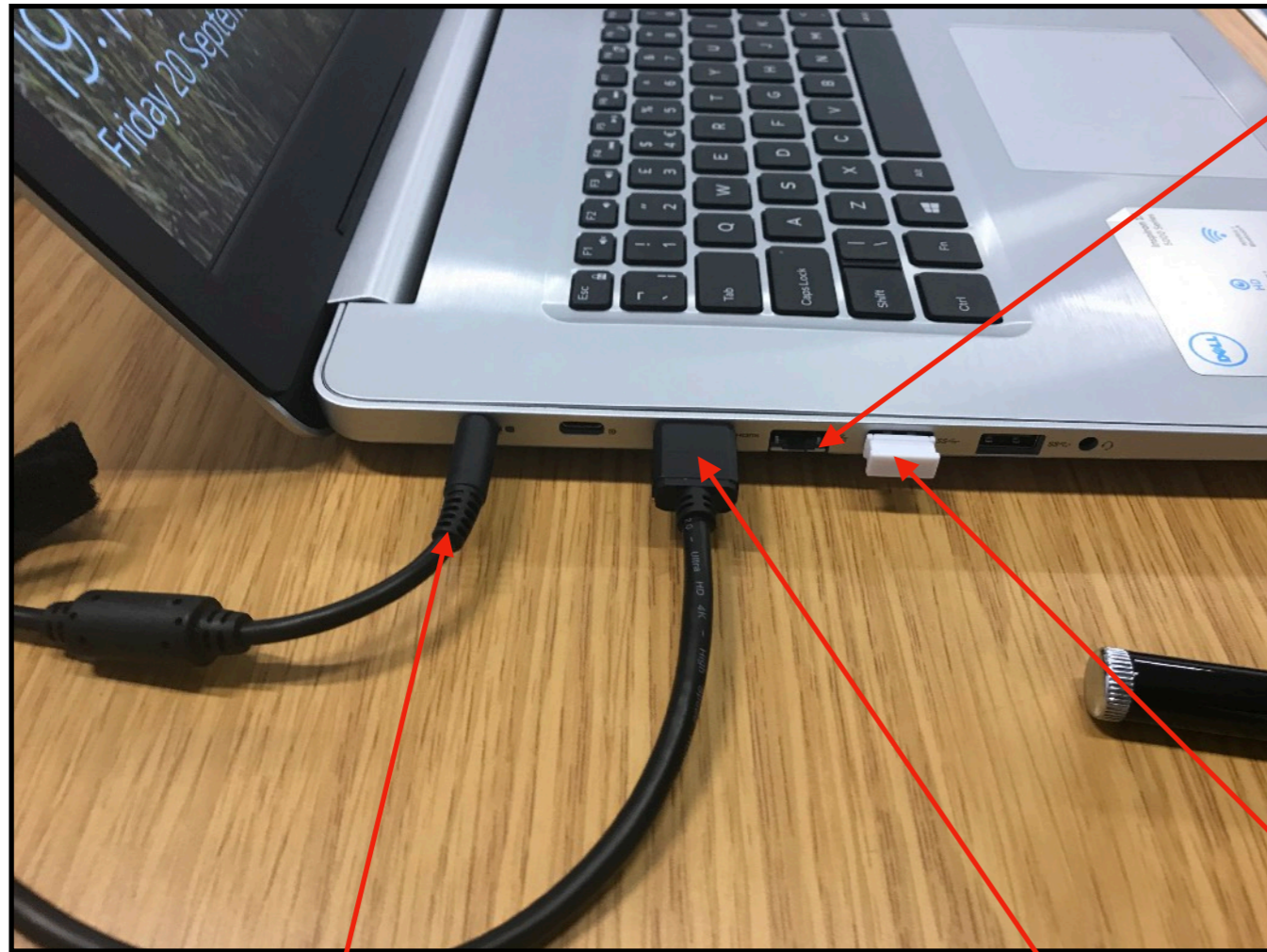
# Carnoustie Camera Club

Laptop & Projector system

Instructions

**Do not switch any part of the system on until fully connected.**

# Connecting Laptop

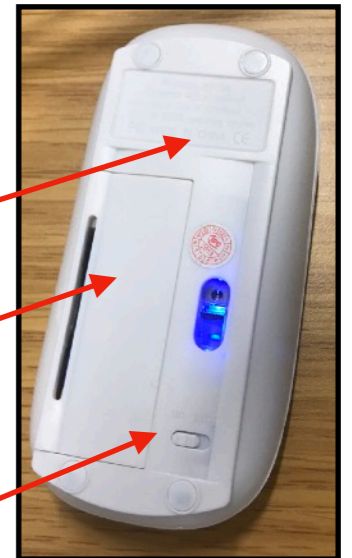


Spare USB port can be used for USB Flexi Light

Wireless Mouse (underside)

Battery compartment

Turn on to use wireless mouse

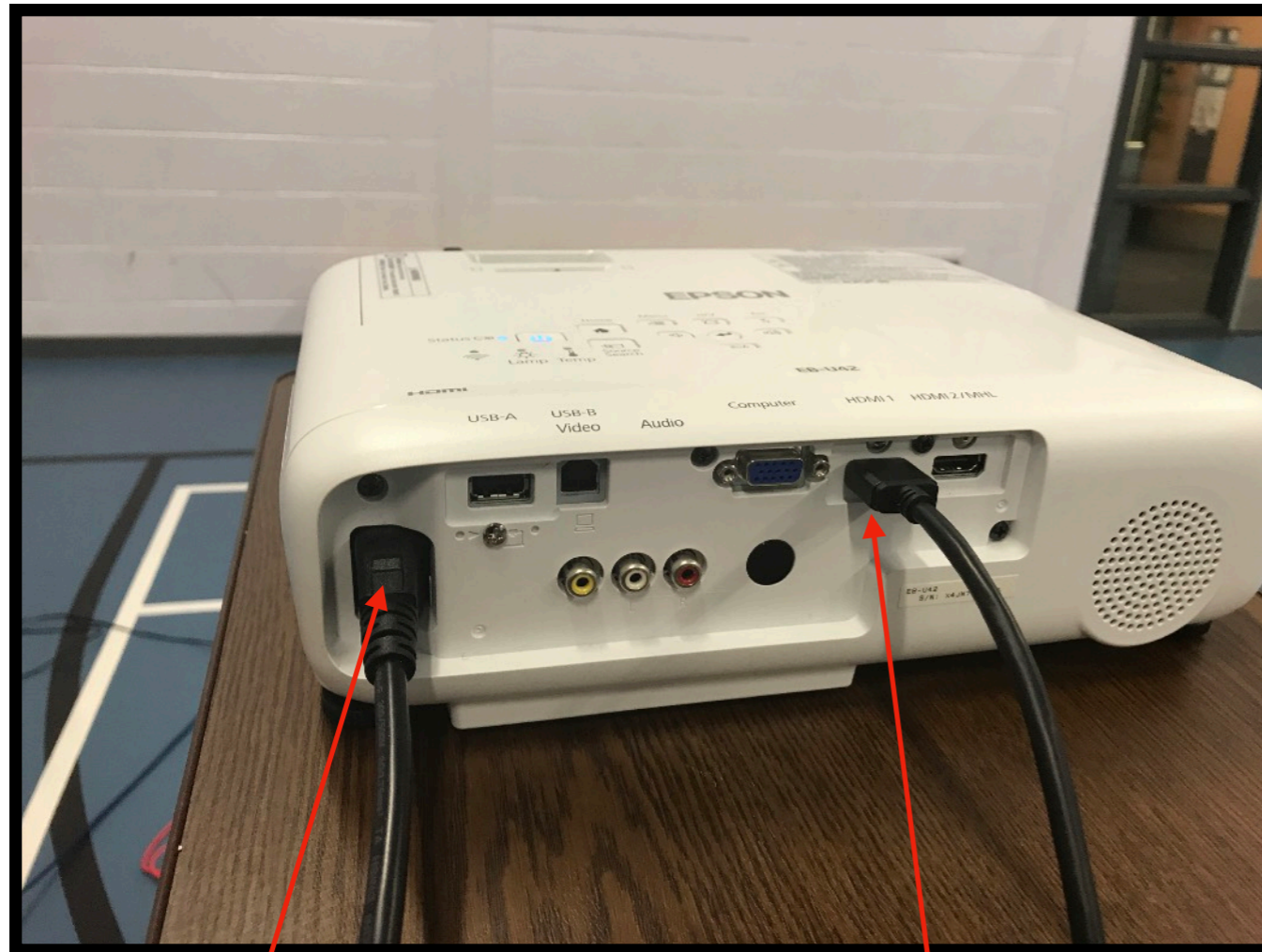


Bluetooth connector for Wireless Mouse plugs into USB port here

Mains transformer power supply plugs in here. Mains transformer plugs into extension reel and the extension reel plugs into the mains at the wall

HDMI Video lead plugs in here. Other end plugs into HDMI Port 1 on the projector

# Connecting Projector



Once connected, power on projector and allow to 'warm up'. Open sliding flap at front to project image. Use zoom and focus rings to obtain correct picture size and quality.

After use, turn projector off but allow fan to run and cool the system before it is powered off.

Mains cable connects to Mains extension reel

HDMI lead from laptop Connects to HDMI 1